



49er, 49erFX and Nacra17

49er and 49erFX European and Nacra 17 World Championships

**La Grande Motte, France
4th to 12th May 2024**

The Organising Authority is the Yacht Club de La Grande Motte (YCGM) in conjunction with the International 49er and Nacra 17 Class Associations.

SAILING INSTRUCTIONS

[NP] denotes a rule that shall not be grounds for protests by a boat. This changes RRS 60.1(a).

[DP] denotes a rule for which the penalty is at the discretion of the International Jury.

[SP] denotes a rule for which a standard penalty may be applied by the race committee without a hearing or a discretionary penalty applied by the International Jury with a hearing

1. RULES

- 1.1 The regatta will be governed by the rules as defined in *The Racing Rules of Sailing*.
- 1.2 The Equipment Regulations (ER) document applies.
- 1.23 Penalties: In RRS 44.1 "Two-Turns Penalty" is changed to "One-Turn Penalty".
- 1.34 Appendix P, *Special Procedures for Rule 42*, shall apply, with RRS P2.1 to P2.4 deleted and replaced by: "When a boat is penalised under RRS P1.2, her penalty shall be a One-Turn Penalty under RRS 44.2. If she fails to take it she shall be disqualified without a hearing."
- 1.45 The Class Rules will apply except for any that are altered by the Notice of Race or the Sailing Instructions. The Class Race Management Guidelines will also apply, but a failure to follow these Guidelines is not on its own grounds for redress. This changes RRS 62.1(a).
- 1.56 The National Authority prescriptions will apply. See Attachment D of the Notice of Race.
- 1.67 [DP] Penalties for breaches of RRS 41, RRS 50, the Class Rules or the Equipment Inspection Regulations are at the discretion of the International Jury.
- 1.78 For 49er and 49erFX - the bottom two panels of the jib area shall be restricted to Class and Event advertising and all competitors shall place class nominated branding on their jibs according to the World Sailing approved 49er Class jib advertising policy. For Nacra 17 - the area of the jib, except for the visibility window, shall be restricted to

Class and Event advertising and all competitors shall place class nominated branding on their jibs according to the World Sailing approved Nacra 17 Class jib advertising policy. All boats shall place the Class nominated stickers on their boom.

2. IDENTIFICATION

Provided two or more Qualifying races have been completed, from Wednesday 8th May onwards, each day while racing, the sailors of the first, second and third boats in series ranking at the beginning of the day shall wear yellow, blue and red lycra bibs respectively. These bibs will be available at the Race Office each day from two hours before the first scheduled warning signal of the day and shall be returned by competitors as soon as possible after the day's racing.

3. CAMERAS AND ELECTRONIC EQUIPMENT

3.1 Boats may be required to carry on board cameras, sound equipment or positioning equipment as specified by the Organising Authority. Competitors may also use their own camera recording equipment and attachments, but these are to be removable for weighing. A boat shall not be given redress based on a claim involving this equipment. This changes RRS 62.1

3.2 When cameras are used, all other boats shall be required to carry dummy weights matching the weight of the camera.

3.3 No competitor or support team shall use a drone over the racing area.

4. COMMUNICATION WITH COMPETITORS

Notices to competitors will be posted on the Official Notice Board on the Championship website

<https://49er.org/event/2024-european-championship/#noticeboard>

5. CHANGES TO SAILING INSTRUCTIONS

Any change to the sailing instructions will be posted not less than two hours before the scheduled warning signal on the day it will take effect, except that any change to the timing of races, will be posted by 2000 the day before it will take effect.

6. SIGNALS MADE ASHORE

6.1 Signals made ashore will be displayed on the official flagpoles located on the boat park near the stage. When a signal is displayed over a fleet flag, it applies to that fleet only.

6.2 [DP][NP][SP] Flag D displayed ashore with one sound signal this means: "the warning signal will be made not less than 45 minutes after flag D is displayed or not before the scheduled time. Boats shall not leave their allocated berth until this signal is made".

7. SCHEDULE OF EVENTS

7.1	Saturday 4 May	0900 - 1800	Registration/ Inspection
	Sunday 5 May	0900 - 1800	Registration/ Inspection
	Day 0 - Monday 6 May	0900 - 1100	Registration/Inspection
		1300	Practice Races
		1730	Competitors Briefing
		1800	Opening Ceremony
	<u>For 49er and Nacra 17</u>		
	Day 1 - Tuesday 7 May	1100	Qualifying Series Races
	Day 2 - Wednesday 8 May	1100	Qualifying Series Races
	Day 3 - Thursday 9 May	1100	Qualifying Series Races
	Day 4 - Friday 10 May	1100	Final Series Races
	Day 5 - Saturday 11 May	1100	Final Series Races
	Day 6 - Sunday 12 May	1000	Final Series Races / Medal Races
	<u>For 49er FX</u>		

Day 1 - Tuesday 7 May	1100	Single Series Races
Day 2 - Wednesday 8 May	1100	Single Series Races
Day 3 - Thursday 9 May	1100	Single Series Races
Day 4 - Friday 10 May	1100	Single Series Races
Day 5 - Saturday 11 May	1100	Single Series Races
Day 6 - Sunday 12 May	tba	Medal Races

Prize Giving and Closing Ceremony as soon as possible after the Medal Races

- 7.2 On Sunday 12th May there will be no warning signal after 1400 for those taking part in the Final Series Races and after 1700 for those taking part in the Medal Races.

8. FORMAT OF RACING - QUALIFYING SERIES AND FINAL SERIES

- 8.1 The regatta will consist of an Opening Series and a Medal Race.
For 49er and Nacra 17 - The Opening Series will be divided into a Qualifying Series and a Final Series.
For - 49erFX - The Opening Series will be a Single Series.
 These races are as described in Attachment C. The provisional racing schedule is described in Attachment D
- 8.2 The Medal Race will be a single, double points race.

9. CLASS FLAGS

- 9.1 In the Qualifying Series, for 49er and Nacra 17 the class flags will be the class insignia on a background of the colour of the appropriate fleet, yellow or blue.
- 9.2 In the Final Series, the class flags will be the class insignia on a background of yellow (gold fleet) and blue (silver fleet).
- 9.3 For 49erFX the class flag will be the class insignia on a background of red.

10. RACING AREAS AND FLEET ASSIGNMENTS

- 10.1 Attachment B shows the location of the race areas.
- 10.2 The provisional race schedule including the time of the first warning signals and the assignment of fleets to courses will be as per Attachment D.
- 10.3 [DP][NP] Boats not racing shall not sail in a course area being used by another fleet.

11. THE COURSES

- 11.1 Attachment A shows the course to be sailed, the order in which the marks are to be passed, the side on which each mark is to be left, and the signals indicating the number of rounds to be sailed.
- 11.2 No later than the warning signal, the race committee signal vessel will display the approximate compass bearing from the race committee signal vessel to Mark 1.
- 11.3 There will be a gate at the leeward marks.
- 11.4 A gate may be replaced by a single mark to be left to port.

12. MARKS

Course A	
All marks	Cylindrical Yellow marks
Change mark.....	Cylindrical Green mark
Course B	
All marks	Tetrahedral Red marks
Change mark.....	Cylindrical White mark
Course C	
All marks.....	Cylindrical Orange marks
Change mark.....	Tetrahedral Red Mark
Spreader mark for Nacra 17.....	Tetrahedral Yellow mark
Starting marks.....	Race Committee vessels

Finishing marks Race Committee vessels

13. THE START

- 13.1 The starting line will be between the staffs displaying orange flags on the race committee vessels.
- 13.2 [DP][NP] Boats whose warning signal has not been made shall avoid the starting area.
- 13.3 A boat starting later than four minutes after her starting signal will be scored Did Not Start. This changes RRS A4 and A5.
- 13.4 To alert boats that a race or sequence of races will begin soon, the orange starting line flag will be displayed with ONE sound signal not less than TWO minutes before the warning signal is displayed.

14. CHANGE OF THE NEXT LEG OF THE COURSE

- 14.1 To change the next leg of the course, the race committee will lay a change mark, which will be as detailed in SI 12. When a new mark is laid, the original mark will be removed as soon as possible.
- 14.2 For Nacra 17 only - if the windward mark is changed a new spreader mark will not be laid.

15. THE FINISH

- 15.1 The finishing line will be between the staffs displaying blue flags on the main race committee vessel and another race committee vessel.
- 15.2 For Nacra 17 only - [DP][SP] When the blue flag is displayed on the main committee vessel NO boats shall enter the Finishing Exclusion Zone other than boats that are finishing who shall leave the zone immediately. See Attachment E

16. TIME LIMITS

- 16.1 For the Opening Series the time limits and target times are as follows:
 - Time limit.....45 minutes
 - Finish window.....15 minutes
 - Target time.....30 minutes or less as described in Appendix C
- 16.2 For the Medal Races the time limits and target times are as follows:
 - Time limit.....30 minutes
 - Finish window.....10 minutes
 - Target time.....20 minutes
- 16.3 Boats failing to finish within the Finish Window (the time after the first boat sails the course and finishes) will be scored Did Not Finish without a hearing. This changes RRS 35, A5.1 and A5.2.

17. PENALTY SYSTEM

- 17.1 Penalties for breaches of NOR 18 (Insurance), NOR 20 (Media Rights), RRS 41, RRS 50, the Equipment Inspection Regulations, the Class Rules and rules in the Notice of Race and Sailing Instructions marked [DP], are at the discretion of the International Jury.
- 17.2 Breaches of rules in the SIs marked [NP] will not be grounds for a protest by a boat. This changes RRS 60.1(a).
- 17.3 For breaches of the SIs marked [SP], the race committee may apply a standard penalty without a hearing. A list of these breaches and the associated standard penalties will be posted on the Official Notice Board. However, the race committee may protest a boat when they consider the standard penalty to be inappropriate. A boat that has been penalised with a standard penalty can neither be protested for the same incident by another boat nor can another boat request redress for this race committee action. This changes RRS 60.1, 63.1 and Appendix A5.

18. PROTESTS AND REQUESTS FOR REDRESS

- 18.1 Protests and requests for redress or reopening shall be delivered via the online official notice board system before the protest time limit. This changes RRS 61.3 The link is: <https://49er.org/event/2024-european-championship/#noticeboard>
- 18.2 The protest time limit will be posted on the Official Notice Board. The protest time limit will be 60 minutes after the last boat of each fleet has finished the last race of the day or the race committee signals no more racing today, whichever is later. The same time limit applies to protests by the Race Committee, Technical Committee and International Jury about incidents they observe in the racing area. This time limit also applies to requests for redress. This changes RRS 61.3 and 62.2.
- 18.3 Notices will be posted no later than 30 minutes after the protest time limit to inform competitors of hearings in which they are parties or named as witnesses. Hearings will be held in the designated jury rooms. Hearings may start before the scheduled time with the agreement of all parties.
- 18.4 The Race Committee, Technical Committee or International Jury intending to protest a boat under RRS 60.2, 60.3 or 62.4 will comply with RRS 61.1(b) by informing her by posting a notice before the end of the protest time limit.
- 18.5 A list of boats that have been penalised under RRS Appendix P on the water or have been disqualified by the International Jury will be posted on the Official Notice Board.
- 18.6 For the purposes of RRS 64.4(b) the 'authority responsible' is the Technical Committee.
- 18.7 RRS 66.2(a) is changed so that it applies to the last day of racing of each series.
- 18.8 On the last day of racing of each series, a request for redress from a decision of the International Jury shall be delivered no later than 20 minutes after the decision was posted. This changes RRS 62.2.
- 18.9 The time limit for requests under RRS N1.4(b) is 5 minutes after a party is informed of a decision.

19. INTERNATIONAL JURY

Decisions of the International Jury will be final as provided in RRS 70.5

20. SCORING

- 20.1 The low point scoring system of Appendix A, as changed below, will apply.
- 20.2 FIVE races are required to be completed to constitute a Championship.
- 20.3 When less than FOUR races have been completed, a boat's overall score shall be the sum of her race scores.
- 20.4 When FOUR or more races have been completed, a boat's overall score shall be the total of her race scores excluding her worst score.
- 20.5 For the Qualifying Series, RRS A5.2 is changed so that the scores are based on the number of boats assigned to the largest fleet.
- 20.6 Final Series fleets need not have completed the same number of races.
- 20.7 The Qualifying Series score plus the Final Series score plus the Medal Race score (if applicable) will be the overall points for the Championship.
- 20.8 The boats in the Gold Fleet will be ranked above the boats in the Silver fleet.
- 20.9 **Resolving Ties**
- 20.9.1 For the Qualifying Series ties will be broken in accordance with RRS A8. In the Final Series ties will be broken in accordance with RRS A8 using the Final Series scores. After the Medal Race any ties will be resolved by the result of the Medal Race.
- 20.9.2 For 49erFX ties shall be broken in accordance with RRS A8 using the Opening Series scores.
- 20.10 **Scoring enquiries**
- To request correction of an alleged error in posted race or series results, a boat shall complete a scoring enquiry form available at the race office. Scoring enquiry forms shall be delivered to the race office. A scoring enquiry may be regarded as a request for redress.

21. SAFETY [DP][SP]

- 21.1 Competitors shall wear a personal flotation device at all times while afloat, except briefly while changing or adjusting clothing or personal equipment.
- 21.2 Each competitor shall, before going afloat each day, check out with their tracker unit, keep while on the water and check back in immediately on returning to shore and at the latest by the end of protest time.
- 21.3 Boats not leaving the shore for the day's races shall notify the race office as soon as possible.
- 21.4 A boat that retires from a race shall notify the race committee as soon as possible.
- 21.5 When the race committee displays flag V with one sound, all support vessels shall monitor the race committee communication channel for rescue instructions.

22. REPLACEMENT OF CREW OR EQUIPMENT

- 22.1 Replacement of helm or crew shall require written approval of the PRO.
- 22.2 Requests for replacement of helm or crew shall be made to the PRO at the first reasonable opportunity. On Sunday 12th May any replacement of helm or crew shall be submitted no later than the protest time limit.
- 22.3 Replacement of equipment shall require written approval of the Technical Committee.
- 22.4 Requests for replacement of equipment shall be made to the Technical Committee at the first reasonable opportunity. On Sunday 12th May any replacement equipment shall be submitted no later than the protest time limit.

23. EQUIPMENT AND MEASUREMENT CHECKS [DP][SP]

- 23.1 Any boat or equipment may be checked for compliance with the class rules and sailing instructions at any time. On the water, a boat can be instructed by the Technical Committee to proceed immediately to a designated area for measurement checks.
- 23.2 Limitations of equipment
- i) Only one set of sails shall be used during the regatta. The sails shall be registered on the online equipment registration form according to the ER.
- ii) For 49er and 49erFX only - Only one forestay shall be used during the regatta.
- 23.3 All boats, when not afloat, shall be placed in the official dinghy park.
- 23.4 All boats shall comply with RRS 78.1 from 1300 on the day before their first scheduled race (hereinafter referred to as "Day Zero") onwards. Non-compliance from 1300 on Day Zero until the start of the first race shall be reported, protested and penalized as if it were discovered after racing on the first day on which races for that boat have been completed. This amends RRS 78.1

24. OFFICIAL BOATS

Official boats will be identified as follows:

Race committee boats.....	White flags with letter "A"
	White flags with letter "B"
	White flags with letter "C"
Jury boats.....	Yellow flags with JURY
Technical Committee boats.....	Dark blue flags with JAUGE
Media boats.....	Green flags with MEDIA
Safety boats.....	Red flags with S + a number
Medic boats.....	Red flag with a white cross

25. SUPPORT VESSELS [DP][NP]

- 25.1 Team leaders, coaches and other support personnel shall not be in the area where boats are racing or within 100 metres of any boat racing from the time of the preparatory signal for the first fleet to start until all boats have finished or the race committee signals a postponement, general recall or abandonment. This SI does not

apply during rescue operations.

- 25.2 At all times while on water, support vessels shall display either their national flag on a staff with the top of the hoist minimum 1.5 m above water level or their national code letters (minimum height 200mm) on the outside of the hull or on the side of the outboard motor cover.
- 25.3 Support vessels shall comply with the Class Support Vessel Regulations enclosed in Attachment E.
- 25.4 Support vessels that are motoring at more than 5 knots shall remain at least 150 metres from any boat that is racing.
- 25.5 All support vessels are at all times subject to the Organising Committee and Race Authority and must comply with any instructions given by these authorities.
- 25.6 The International Jury may direct the Organising Authority to revoke privileges from any boat or person found to be in breach of SI 25.
- 25.7 Support vessels shall always be on the outside of the media boats (away from the fleet side) so that the media boats can capture images without coach boats in the image. This does not apply during any safety incident.
- 25.8 For safety purposes, support vessels should monitor the race management channels Course A VHF channel 69, Course B VHF channel 72 and Course C VHF channel 77 but shall not transmit on these channels except in the case of an emergency. Safety boats will use VHF channel 8.

26. CODE OF CONDUCT [DP][NP]

Competitors shall comply with any reasonable request from a regatta official or a member of the Organising Authority.

27. TRASH DISPOSAL [DP][NP]

As sailors, we seek to protect and restore our waters. Trash may be placed aboard support and race committee boats.

28. RADIO COMMUNICATION [DP][NP]

A boat shall neither make radio transmissions while racing nor receive radio communications not available to all boats. This restriction also applies to mobile telephones.

29. PRIZES

- 29.1 Prizes for the Championships will be announced and awarded at the end of Racing for the first three places overall and for the Other Fleet(s) respectively. The winners will receive medals -
- 49er and 49erFX European Open Championship - 1st, 2nd, 3rd,
 - European Championships - 1st, 2nd, 3rd,
 - Nacra 17 World Championship - 1st, 2nd, 3rd,
 - Silver fleet winners (when applicable)
- 29.2 Other prizes may be awarded at the discretion of the Organising Authority.

30. RISK STATEMENT

RRS 3 of the Racing Rules of Sailing states: “The responsibility for a boat’s decision to participate in a race or to continue racing is her’s alone.”

Sailing is by its nature an unpredictable sport and therefore inherently involves an element of risk. By taking part in the event, each competitor agrees and acknowledges that:

- a) They are aware of the inherent element of risk involved in the sport and accept responsibility for the exposure of themselves, their crew and their boat to such inherent risk whilst taking part in the event;
- b) They are responsible for the safety of themselves, their crew, their boat and their other property whether afloat or ashore;

- c) They accept responsibility for any injury, damage or loss to the extent caused by their own actions or omission;
- d) Their boat is in good order, equipped to sail in the event and they are fit to participate;
- e) The provision of a race management team, patrol boats and other officials and volunteers by the event organiser does not relieve them of their own responsibilities;
- f) The provision of patrol boat cover is limited to such assistance, particularly in extreme weather conditions, as can be practically provided in the circumstances.
- g) It is their responsibility to familiarise themselves with any risks specific to this venue or this event drawn to their attention in any rules and information produced for this event and to attend any competitors' meetings held for this event.

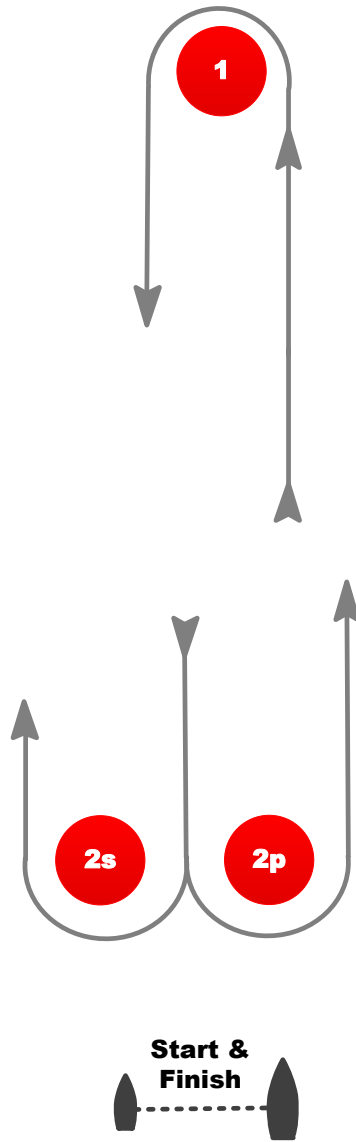
31. INSURANCE [DP][NP]

Each participating boat shall have valid third-party liability insurance with a minimum cover of at least Euros 1,500,000 (or equivalent) per incident.

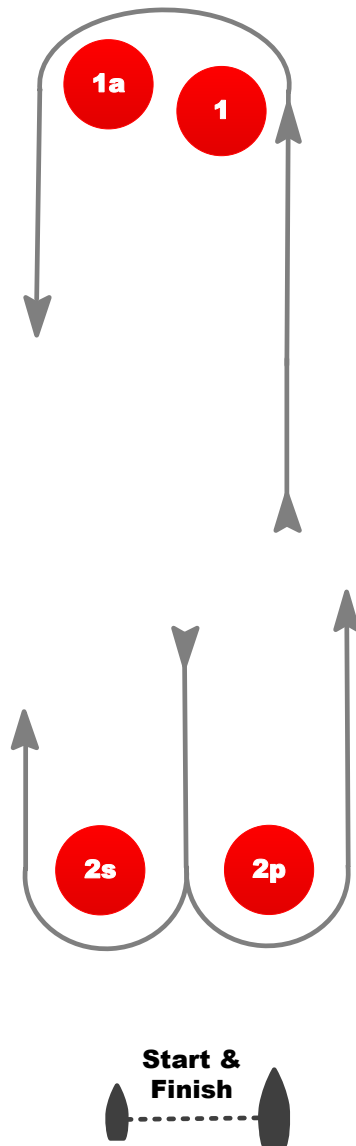
Attachment A

Course Diagram

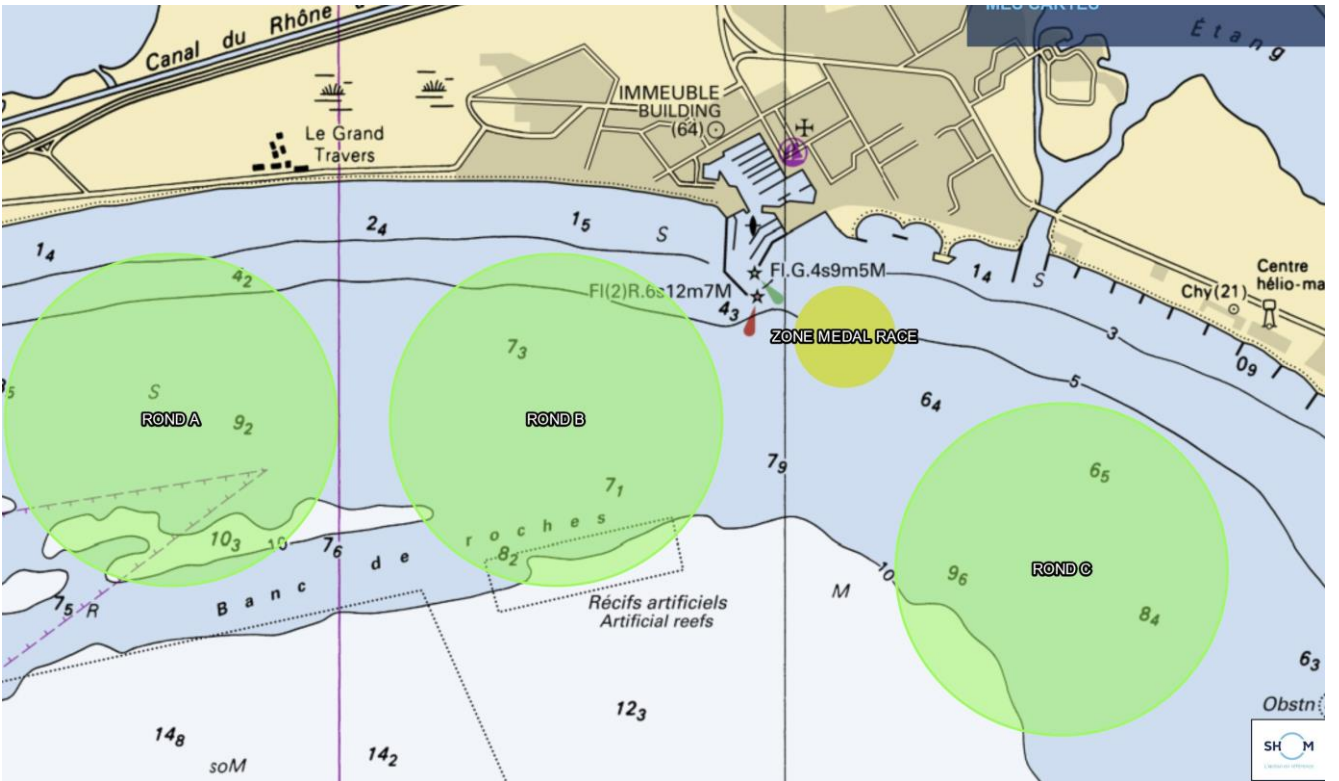
L	COURSE: WINDWARD / LEEWARD
Signal	Mark Rounding Order
L2	Start – 1 – 2s/2p – 1 – Finish
L3	Start – 1 – 2s/2p – 1 – 2s/2p – 1 – Finish



LA	COURSE: WINDWARD / LEEWARD with spreader mark and leeward finish
Signal	Mark Rounding Order
LA2	Start – 1 – 1a – 2s/2p – 1 – 1a – Finish
LA3	Start – 1 – 1a – 2s/2p – 1 – 1a – 2s/2p – 1 – 1a – Finish
LA4	Start – 1 – 1a – 2s/2p – 1 – 1a – 2s/2p – 1 – 1a – 2s/2p – 1 – 1a – Finish



Attachment B Course Locations and Venue Map



EMERGENCY MEETING POINT



Attachment C

Format of Racing

For 49er and Nacra 17

The Opening Series will be in two series:

1. Qualifying Series
2. Final Series

For 49erFX

The Opening Series will be a Single Series

For 49er and Nacra 17

1. Qualifying Series (Days 1, 2 and 3)

- 1.1 The boats will be split into TWO fleets for 49er and Nacra 17 of approximately equal numbers of boats. The Qualifying Series will consist of a maximum of NINE races. However, if less than SIX races have been completed by all fleets by the end of Day 3, the Qualifying Series will continue.
- 1.2 The Organising Authority will make initial fleet assignments on the basis of the top 50 ranked boats from the 2024 World Championship for 49er and the 2023 European Championship for Nacra 17 with the remainder being taken in numerical order of sail numbers. The method of assignment to fleets will be as per 1.3 below. The ranking will remain in force until the end of the day during which the 2nd Qualifying Race is completed by all fleets.
- 1.3 If all fleets have completed the same number of races, boats will be reassigned to fleets on the basis of their Qualifying Series scores as detailed below. If all fleets have not completed the same number of races by the end of a day, the fleets with fewer races will continue racing the following day until all fleets have completed the same number of races. However, the reassignments will be calculated for those races, numbered in order of completion, completed by all fleets. Reassignments will be made as below.
- 1.4 If at the end of the Qualifying Series some boats have more race scores than others, scores for those boats' most recent races will be excluded so that all boats have the same number of race scores.

For 49er and Nacra 17

<u>Place in Qualifying Series</u>	<u>Fleet assignment</u>
First.....	Yellow
Second.....	Blue
Third.....	Blue
Fourth.....	Yellow
and so on	

Fleet assignments will be based on the ranking available at 2000 that day regardless of protests or requests for redress not yet decided. However at the end of the Qualifying Series, the fleet assignments will be made no later than 0700 on the day they take effect.

For 49er and Nacra 17

2. Final Series (Days 4, 5 and 6)

- 2.1 The Final Series will consist of a maximum of SEVEN races for Gold fleet and EIGHT races for Silver fleet.

- 2.2 For 49er and Nacra 17 the top **25 boats** based on their Qualifying Series scores after Day 3 will race in the Gold fleet (unless the Qualifying Series has been extended under section 1.1 above).
- 2.3 The remaining boats will race in the Silver fleet.
- 2.4 Days 4 and 5 THREE races are scheduled per day for each fleet.
- 2.5 Day 6 ONE race is scheduled for Gold fleet and TWO races for Silver fleet.
- 2.6 On Sunday 12th May there will be no warning signal after 1400.

For 49erFX

3. **Opening Series** (Days 1 to 6)

- 3.1 The boats will race in a Single Fleet. The Opening Series will consist of a maximum of SIXTEEN races.
- 3.2 Days 1 to 5 THREE races are scheduled per day.
- 3.3 Day 6 ONE race is scheduled.
- 3.4 On Sunday 12th May there will be no warning signal after 1400.

For ALL Fleets

4. **Medal Race** (Day 6)

- 4.1 No warning signal for the Medal Races will be made after 1700 on Sunday 12th May.
- 4.2 The Medal Race will be for the top 10 boats overall in the Gold Fleet.
ONE race, target time 20 minutes, non-discardable, double low points scoring.
- 4.3 The points for each boat carried forward into the Medal Race will be as SI 20.4 after the Opening Series.
- 4.4 Medal Race boats shall be made available for equipment inspection no later than 60 mins before the Medal Race warning signal. A quarantine area may be set aside for the competing Medal Race boats. Boats shall comply with any instructions of the Technical Committee concerning inspection or quarantine.

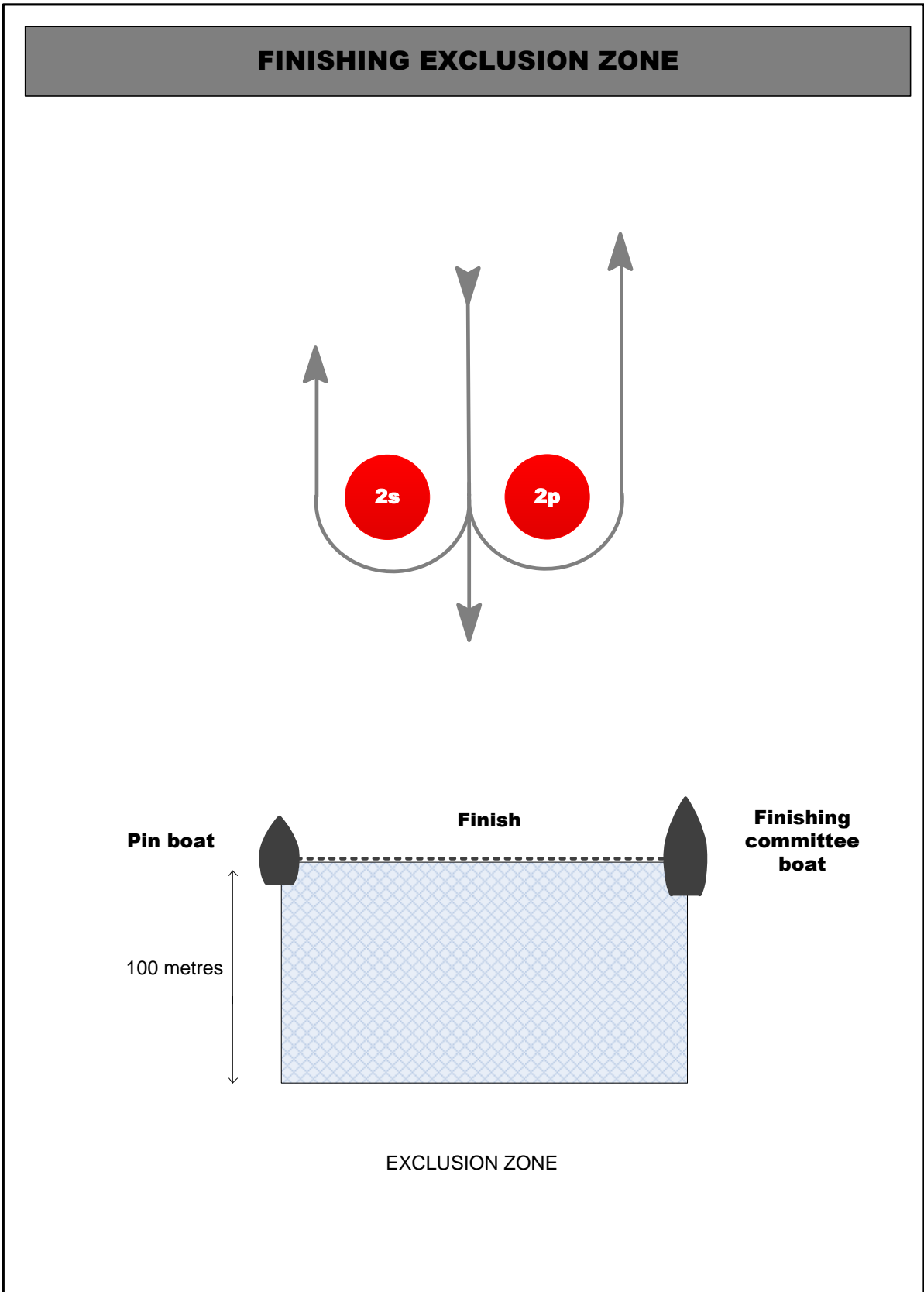
Attachment D

Provisional Racing Schedule

2024 European and World Championships La Grande Motte Warning signal			
Day 0 – 6 May Practice Day	Course A	Course B	Course C
12.55	Practice Race - 49er FX	Practice Race - 49er	Practice Race - Nacra
Day 1 – 7 May Qualifying	Course A	Course B	Course C
10.55	49erFX 3 races	49er 3 races	49er 3 races
Not Before 12.55		Nacra 3 races	Nacra 3 races
Day 2- 8 May Qualifying	Course A	Course B	Course C
10.55	Nacra 3 races		Nacra 3 races
Not Before 12.55	49erFX 3 races	49er 3 races	49er 3 races
Day 3 – 9 May Qualifying	Course A	Course B	Course C
10.55	Nacra 3 races	49erFX 3 races	Nacra 3 races
Not Before 12.55	49er 3 races	49er 3 races	
Day 4 – 10 May Final Series	Course A	Course B	Course C
10.55	49erFX 3 races	49er Silver 3 races	49er Gold 3 races
Not Before 12.55		Nacra Silver 3 races	Nacra Gold 3 races
Day 5 – 11 May Final Series	Course A	Course B	Course C
10.55	49er Silver 3 races	49er Gold 3 races	
Not Before 12.55	Nacra Gold 3 races	49erFX 3 races	Nacra Silver 3 races
Day 6 – 12 May Final Series	Course A	Course B	Course C
09.55	49erFX 1 race	49er Gold 1 race	Nacra Gold 1 race
Not before 10.25	49er Silver 2 races		Nacra Silver 2 races
Not before 13.55		Nacra Medal Race	
Not before 14.40		49erFX Medal Race	
Not before 15.25		49er Medal Race	

Attachment E

Finishing Exclusion Zone



Attachment F Support Vessel Regulations

Support Vessels shall carry the following Equipment on board

- Life jackets / buoyance aids for the driver and all passengers,
- Engine kill cord (also known as a safety lanyard or automatic engine immobiliser) with a spare kill cord on the support vessel
- VHF radio capable of receiving instruction from Safety or Race Committee
- First-aid kit
- Device for making a sound signal
- Compass
- Adequate anchor and tackle for conditions and depth
- Tow rope (minimum 15m long and 10mm thick)
- Knife

Support Vessel Regulations

- Support Vessels shall be registered with the Organising Authority and shall be marked with their applicable national sail letters clearly displayed, the minimum height for these letters is 200mm.
- Support Vessels shall comply with all local regulations
- Support Vessels shall follow Race Committee instructions on the designated VHF channel
- **Kill cords shall be worn at all times when the engine is running**
- Life jackets / buoyance aids - it is recommended that they are worn at all times when afloat and **shall** be worn in winds of over 10 knots or when motoring at more than 10 knots
- Support vessels shall not be positioned, except during rescue operations
 - Closer than 100 metres of any boat racing
 - Within 100 metres to leeward of the starting line and its extensions from the warning signal until all boats have left the starting area or the race committee signals a postponement, general recall or abandonment
 - Within 100 metres of any mark of the course while boats are in the vicinity of that mark
 - Within 100 metres of the finishing line while boats are finishing
 - In addition, support vessels that are motoring above 5 knots shall remain at least 150 metres from any boat racing

David Campbell James

Email campbelljames@btinternet.com

Updated January 2022